



Jabra Engage 50

Engineered to be the world's best professional digital corded headset*

The Jabra Engage 50 headset is designed for softphone environments, with features that combat noise and interruptions to drive customer satisfaction in the contact center.

Digital sound for the clearest calls

A unique, 3-microphone system filters out background noise and breathing sounds, giving callers a superior experience. Stereo sound and super wideband give vibrant, lifelike conversations – with the highest levels of hearing protection for agents.

Reduce interruptions and enhance agents' focus

Multi-color status lights on both earcups ensure interruptions are kept to a minimum. More than just a busylight, the status lights can be customized for specific needs¹. Impressive passive noise cancellation enhances agents' focus.

Live guidance for agents and rich call analytics improve customer experience

The Engage 50 leverages Jabra software³ for a smarter way to overcome noise. With live on-screen microphone guidance for agents, and rich call analytics for the business, the Engage 50 helps deliver better-sounding calls.

Better call control for greater efficiency

The call control unit accessory enables agents to adjust volume levels and mute, speed dial, answer and end calls, and update their status lights at the touch of a button.

Designed for softphone environments

Built for today – ready for tomorrow. Features category-first USB-C for easy connection to PC and mobile devices, and with USB-A connectivity available as an accessory.

* Refer to Jabra.com/commercial-claims
¹ Using Jabra SDK ² Optional accessory
³ Jabra Xpress, Jabra Direct and Jabra SDK

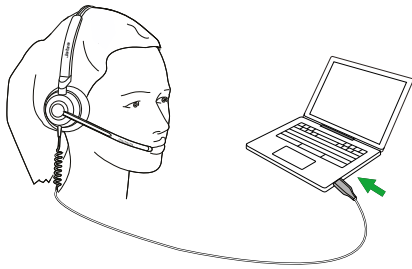
At a glance

Jabra Engage 50 corded headset

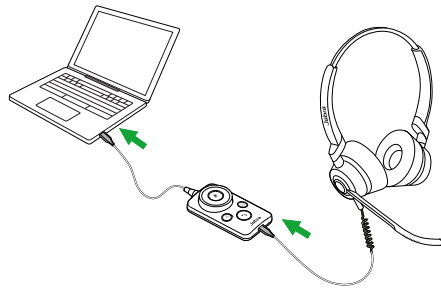
- 3-microphone system
- Stereo sound and super wideband
- Customizable status lights¹ on both earcups
- Intuitive, stay-flat control unit²
- Live microphone guidance for agents
- Rich call analytics for the business
- USB-C connectivity. USB-A connectivity also available²

Works with

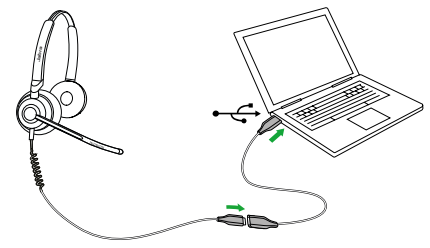
How to connect



PC/Softphone/Mobile devices with USB-C connectivity: Simply plug into the USB-C port on your PC or any mobile device with a USB-C socket that is compatible with voice calls.

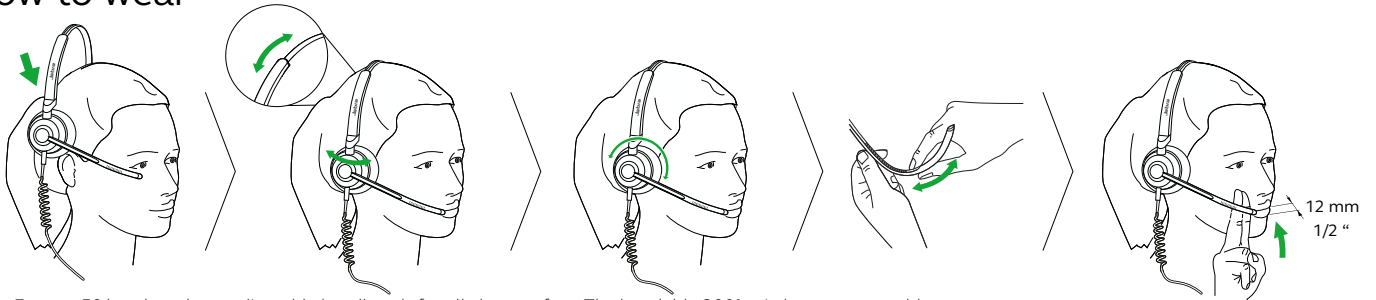


Using the Control Unit accessory: Just plug the headset into the control unit, then plug the control unit into the PC. USB-A and USB-C versions of the controller are available.



Using the Extension Cord accessory: Simply plug the headset into the extension cord then plug the extension cord into your PC's USB port. Both USB-A and USB-C versions of the extension cord are available.

How to wear



Jabra Engage 50 headsets have adjustable headbands for all-day comfort. The bendable 300° spin boom arm enables easy adjustment without risk of breakage. Place the microphone 12 mm away from the mouth for optimal positioning.



Features	Jabra Engage 50 Stereo	Jabra Engage 50 Mono
Conversation		
3-way noise cancelling microphone	Yes	Yes
Intelligent volume control (speech level normalization and balanced voice)	Yes	Yes
Superior user sound protection (PeakStop™ 105 dB SPL, IntelliTone™ 2.0)	Yes	Yes
Regulatory approvals (Noise at work, G616 and OSHA-compliant)	Yes	Yes
Digital Signal Processing	Yes	Yes
Microphone (G-MOS, Tx, CC)	4.7	4.7
Speaker (MOS)	4.7	4.7
Super wideband (up to kHz)	20	20
Stereo sound in calls	Yes	No
Skype for Business Open Office ¹	Yes	Yes
Boom arm adjustable	300°	300°
Flexible boom arm	Yes	Yes
Concentration		
Status (busy) lights	Yes	Yes
Ear cushions	Soft leatherette	Soft leatherette
Hi-Fi sound (up to kHz)	20	20
Freedom		
Wearing style	Headband	Headband
Headset weight (g)	96	61
Headset connection – USB-C	Yes	Yes
Headset connection – USB-A ²	Yes	Yes
Stay-flat controller ³	Yes	Yes
Cord length (headset/controller/extension - cm)	120/120/120	120/120/120
Digital experiences		
End-user experiences ⁴ includes data on:		
• Boom arm positioning	Yes	Yes
Business experiences ⁵ includes data on:		
• Boom arm positioning		
• Malfunctioning microphones		
• Background noise levels	Yes	Yes
• Speech analytics		
• Audio exposure		
• Status (busy) light customization ⁶		
• Control unit customization		

Compatibility & certifications Refer to Jabra.com



¹ Certification is for headset when used with the MS control unit ² USB-A connectivity with optional accessory of either USB-A control unit or USB-A extension cord ³ Optional accessory ⁴ Using Jabra Direct ⁵ Using Jabra Xpress ⁶ Using Jabra SDK ⁷ Unify OpenScape